

ALUMASpan™

by

SpandrelTech Ltd.

PREFORMED ALUMINUM WALL PANELS



**SPECIALIZING IN ARCHITECTURAL PRODUCTS
FOR THE BUILDING INDUSTRY
SINCE 1991**

*Featuring Structured Incremental Shipping™
Catering to the Needs of our Customers*

ALUMASPAN™ PREFORMED ALUMINUM WALL PANELS...

DESCRIPTION

Alumaspan™ by SpandrelTech Ltd. preformed aluminum wall panels consist of 3 mm (1/8") solid thickness pan formed panels in the following Aluminum Association alloys.

3003: General purpose alloy for moderate strength applications. 20% strength increase over 1100 with same good forming, weldability and corrosion resistance.

5005: For applications comparable to 1100 or 3003 where anodizing is required. Anodized finish matches up with extrusion architectural alloy 6063.

5052: Stronger than 3003 yet readily formable in the intermediate tempers.

Panels are non-load bearing and pan formed in factory with corners welded and ground smooth before anodizing or finishing with PPG or Valspar Coatings.



Alumaspan™ Preformed Aluminum Wall Panels, used in cylindrical building. Bell Mobility Headquarters, Toronto, Ontario. Page + Steel Inc.

Options

1. Other thickness alloys available upon request.
2. Also available with adjustable Z-girts for ease of installation.
3. Perforated panels available for acoustical or ventilation applications

Finishes

Available in any type anodized finish or painted finish to meet specifications. Painted finishes are available in a wide range of solid colours, pearlescents and metallic shades. Custom colours available upon request.

Dimensional Criteria

Maximum panel length is 3.6 m (12'-0") vertically or horizontally. Pan depth is provided as required.

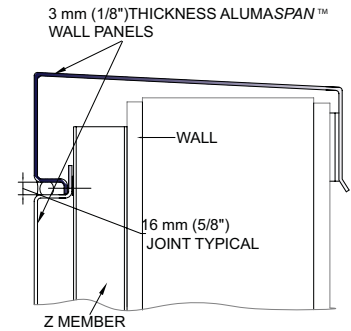
Structured Incremental Shipping™

If required, panels may be delivered on a floor-by-floor or elevation-by-elevation basis for installation convenience.

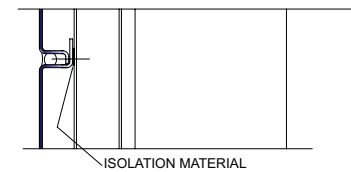
Fabrication Capabilities

1. Brake Forming, up to 3.6 m (12'-0") lengths.
2. Shearing, up to 3.6 m (12'-0") lengths
3. Hole Punching
4. Notching
5. Rolling, up to 3 m (10'-0") lengths
6. Welding - Mig, Tig, Stud, Stick, Wire Feed

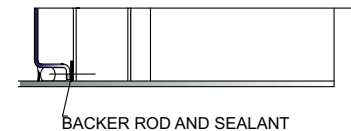
TYPICAL DETAILS



PARAPET/COPING

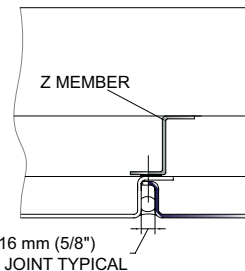


HORIZONTAL JOINT



BACKER ROD AND SEALANT

BASE OF WALL



VERTICAL JOINT

USE

1. Exterior wall cladding
2. Spandrel panels
3. Interior cladding

LIMITATIONS

There are no limitations on the use of Alumaspan™ by SpandrelTech Ltd. other than load and allowable deflection limits. Panels are non-load bearing. All load/height applications are to be designed and approved to accommodate customer's requirements as specified by a professional engineer.

STANDARDS CONFORMANCE

Aluminum conforms to:

1. AAMA 2605-98 Voluntary Specification, Performance Requirements And Test Procedures for Superior Performing Organic Coatings on Aluminum Extrusions and Panels.
2. AA DAF 45-97 Designation System for Aluminum Finishes.
3. ASTM B209 Standard Specification for Aluminum and Aluminum Alloy Sheet and Plate; 1996.



For Beauty, Strength and Durability, to Suit Any Building Design

INSTALLATION

Preparatory Work:

Protect aluminum surfaces in contact with steel, concrete, mortar, plaster or other cementitious surface with isolation material or coating such as alkali resistant bituminous paint or epoxy resin solution.

Touch up building framing members with touch-up primer.

Methods:

Panels to be installed by experienced installers in strict accordance with manufacturer's recommendations and as follows:

1. Provide supplemental steel support members to suit design requirements.
2. Ensure complete and positive nesting of panel edges on Z members and girts.
3. Install wet joint system to prevent rain penetration.
4. For dry joint system, provide for positive drainage of condensation occurring within wall construction and water entering joints, to exterior face of wall, in accordance with NRC "Rain Screen Principles".
5. Fasten Z members and girts through liner sheets to structural supports with self-tapping screws at 305 mm (12") o.c. and to suit loading requirements.
6. Install panels to Z members and girts with concealed fasteners where possible and spaced to suit load requirements as per Engineer approval. Keep exposed fasteners to minimum.

Install all necessary metal closures, flashings and trim, properly sealed to stop direct weather penetration.

Precautions:

As the work progresses, remove all excess or foreign materials, which would set up or become difficult to remove from finished surfaces. Where applicable, touch-up with matching paint any minor abrasions at screw heads, lap joints and elsewhere where exposed in the finished work, to satisfaction of [Consultant] [Architect] [Engineer].

Building Codes:

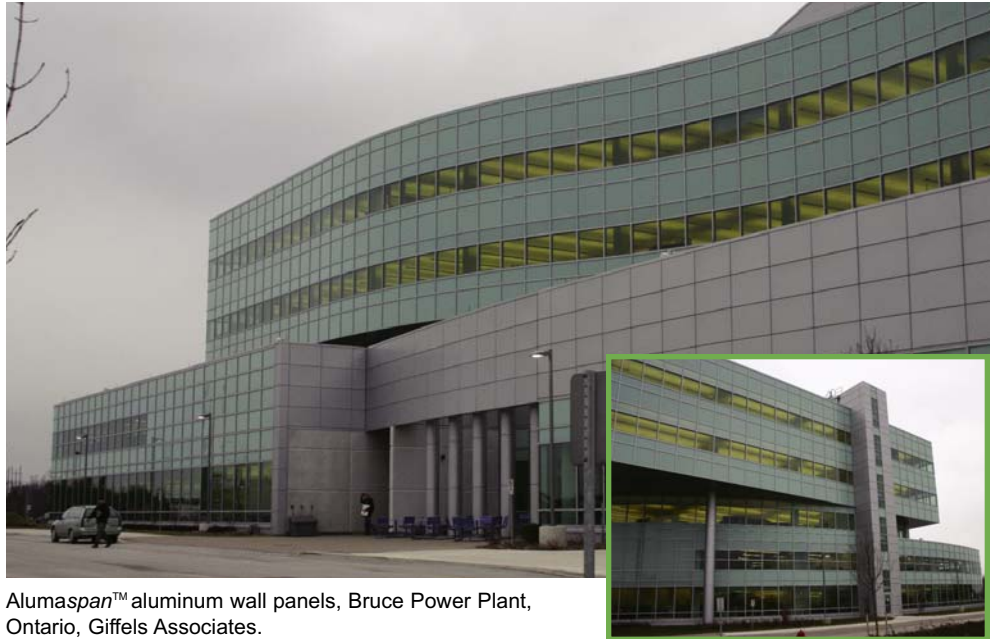
Alumaspan™ by SpandrelTech Ltd. conforms to building codes.

Availability:

Distributed across Canada and throughout the U.S.

Costs:

Contact SpandrelTech Ltd.



Alumaspan™ aluminum wall panels, Bruce Power Plant, Ontario, Giffels Associates.

WARRANTY

One year limited warranty against faulty materials, fabrication or workmanship. Extended warranties available upon request prior to commencement of project. Contact SpandrelTech Ltd. for requirements.

MAINTENANCE

It is recommended that aluminum wall panels be cleaned at least once a year using a sponge and a soft alkali-free detergent in water. Refer to appropriate AAMA (Architectural Aluminum Manufacturer's Association) cleaning and maintenance guide, available from SpandrelTech Ltd. for more detailed information.



Alumaspan™ wall and soffit panels. HOOP Realty Ltd. Oakville, Ontario. Akitt, Swanson and Pearce Architects.

TECHNICAL SERVICES

1. Preliminary consultation on installation and application.
2. Assistance with shop drawings and expediting projects to successful completion.
3. Technical advice and suggestions for retrofit projects.
4. Accurate estimation for ease of determining final pricing.
5. Consultation with project co-ordinators and site assistance on jobs in progress.
6. Structured Incremental Shipping™.

OTHER SPANDRELTECH PRODUCTS

SpandrelTech Ltd. also manufactures and/or provides the following:

1. Thermaspan™ custom laminated insulated panels
2. Galvaspan™ Galvanized Metal curtain wall back pans
3. Porcelain enamel wall panels
4. Formaspan™ metal column covers
5. Steel or aluminum brake shapes, corners and other unique fabricating services
6. Adjustable Z-girts, galvanized or aluminum.

SPECIFICATION (Short Form)

Spec Note: See long form 3-Part specification at end of "Alumaspan™ Preformed Aluminum Wall Panels" section of manual.

Aluminum wall cladding: "Alumaspan" custom fabricated 3 mm (1/8") thickness, [3003] [5005] [5052] alloy, [50 mm (2")] deep pan formed units as shown on the drawings, [____] colour] [anodized finish] [PPG finish] [Valspar finish] as manufactured by SpandrelTech Ltd., 16 Erin Park Drive, Erin, Ontario N0B 1T0; Tel: (519) 833-9684 or 1-888-833-9684; Fax: (519) 833-0845; Email: sales@spandreltech.com; Web: www.spandreltech.com

COMPANY HISTORY

1. Celebrating its 15th anniversary in 2006, SpandrelTech Ltd. continues to thrive and build on its strong reputation for successfully completing innovative curtainwall projects nationwide, and developing extensive relationships with window and siding companies and construction professionals both in Canada and the United States of America.
2. A milestone was marked in 2002 as SpandrelTech Ltd. moved into its new state-of-the-art facility in Erin, Ontario. With the implementation of new CNC equipment throughout the plant, a committed management team, and new, innovative panel design techniques, SpandrelTech Ltd. is changing the face of the urban landscape and remains the proven choice of window and siding companies, architects, and building engineers alike.
3. Complex and unique engineering challenges, complete interior and exterior paneling solutions and Structured Incremental Shipping™ are only a few of the innovative services and products that set SpandrelTech Ltd. apart.



Black anodized Alumaspan™ wall panels on facade over reflecting pool. Perimeter Institute for Theological Studies. Waterloo, Ontario. Saucier & Perrotte Architects.



SpandrelTech Ltd.
16 Erin Park Dr.
Erin ON N0B 1T0 Canada
e-mail: sales@spandreltech.com

Tel (519) 833-9684
Toll free 1-888-833-9684
Fax (519) 833-0845
Web: www.spandreltech.com